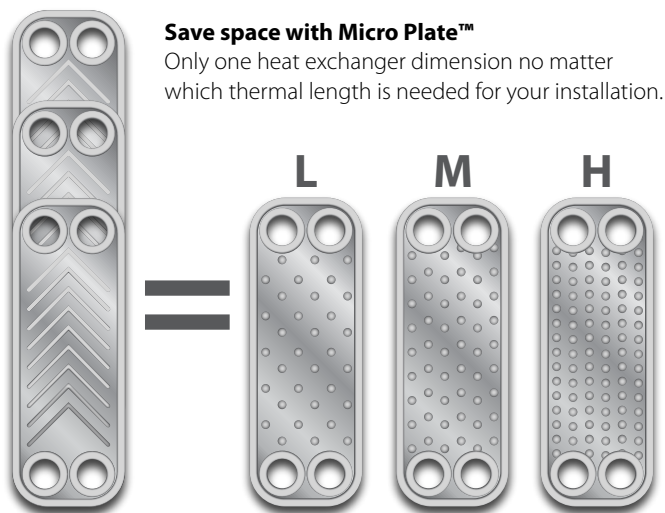


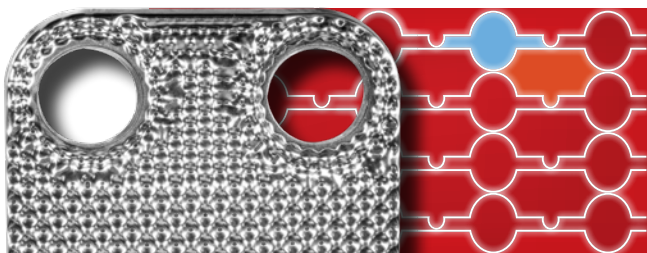
## Experience the **power** of **Micro Plate™** technology



### Save space with Micro Plate™

Only one heat exchanger dimension no matter which thermal length is needed for your installation.

## Balance your **asymmetric flow** with the new XB05X



**The perfect solution** for domestic hot water, floor heating, and heating applications.

**Break the limits** with the asymmetric XB05X Micro Plate™. Maximize your heat transfer and minimize pressure drop in asymmetric flow rates.

**Available in** copper and stainless steel brazing.

ENGINEERING  
TOMORROW

*Danfoss*

## SONDEX® and Danfoss Braze Heat Exchangers Second-to-none

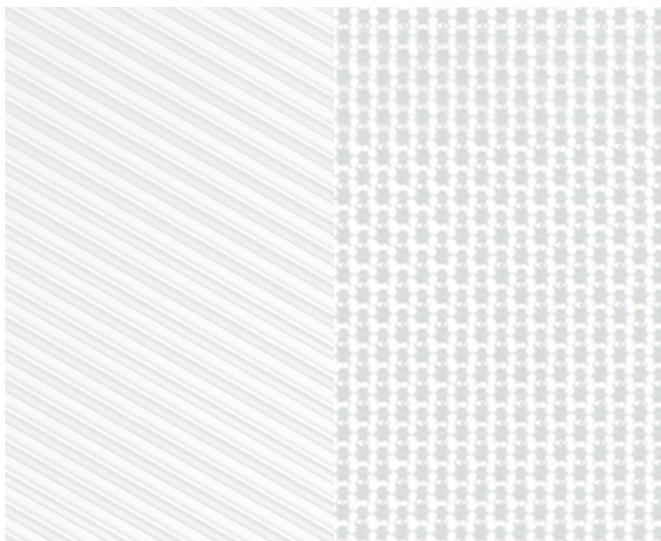
### One-stop-shopping for Braze Heat Exchangers

We have consolidated the SONDEX® and Danfoss braze heat exchangers into a single, combined product program to provide you with one-stop-shopping.

Going forward we are able to offer a braze product portfolio that covers all applications and is second-to-none.

### Know-how and Delivery Close to You

Our combined sales organizations operate side by side and we take pride in consistently providing you with the highest quality products and service.



**Sondex A/S** • Member of the Danfoss Group  
Heating Segment • [sondex.net](http://sondex.net) • +45 7630 6100 • E-Mail: [info@sondex.dk](mailto:info@sondex.dk)

Danfoss can accept no responsibility for possible errors in catalogues, brochures and other printed material. Danfoss reserves the right to alter its products without notice. This also applies to products already on order provided that such alterations can be made without consequential changes being necessary in specifications already agreed. All trademarks in this material are property of the respective companies. Danfoss and all Danfoss logotypes are trademarks of Danfoss A/S. All rights reserved.

AD251086498699en-000301

© Copyright Danfoss

ENGINEERING  
TOMORROW

*Danfoss*

Braze HEX

## Ultra-efficient Braze Heat Exchangers





World-leading Range of Braze Heat Exchangers for District Heating and Industrial Cooling.

**1-stop-  
shopping**  
for Braze Heat  
Exchangers



[www.heatexchangers.danfoss.com](http://www.heatexchangers.danfoss.com)

**SONDEX®**

| Connection size: 3/4" - 2"  |   |   |   |  |   |   |   |
|---|---|---|---|--|---|---|---|
|  |  |  |  |  |   |   |  |
| <b>XB05</b>   | <b>XB06</b>   | <b>XBDW22</b>   | <b>XB25</b>   | <b>XB12</b>  | <b>SL70</b>   | <b>XB37</b>   | <b>XB52</b>   |
| 312 x 76 [mm]   | 320 x 95 [mm]   | 376 x 119 [mm]  | 491 x 94,5 [mm]   | 288 x 118 [mm]   | 498 x 117 [mm]  | 525 x 119 [mm]  | 466 x 256 [mm]  |
| ¾"  | ¾"  | ¾"  | ¾"  | 1" & 5/4"  | 1" & 1½"  | 1"  | 2"  |
| M, X  | H+*, H, L   | DW**  | H   | H, M, L  | TL, TK, TM, DW**  | H, M, L   | M   |
|  |  |  |  |  |  |  |  |
| Cu 25 [bar]<br>StS 10 (X plate) [bar]   | Cu, CoResist 25 [bar]<br>StS 16 [bar]   | Cu, CoResist 16 [bar]   | Cu, CoResist 25 [bar]   | Cu, CoResist 25 [bar]  | Cu 25; 35; 40 [bar]<br>StS 16 [bar]   | Cu, CoResist 25 [bar]<br>StS 16 [bar]   | Cu 25 [Bar]   |

| Connection size: 2" - DN100   |   |   |   |   |   |   |
|---|---|---|---|---|---|---|
|   |   |   |   |   |   |   |
| <b>XB59</b>   | <b>SL140</b>  | <b>XB61</b>   | <b>XB66</b>   | <b>SL222</b>  | <b>XB71</b>   | <b>SL333</b>  |
| 613 x 186 [mm]  | 607 x 237 [mm]  | 525 x 243 [mm]  | 706 x 296 [mm]  | 748 x 324 [mm]  | 976 x 373 [mm]  | 1003 x 380 [mm]   |
| 2"  | 2" & 2½"  | 2"  | 2½" & DN65  | DN80  | DN100   | DN100   |
| M   | TL, TK, TM, DW**  | H, M, L   | H, L  | TL  | H, M, L   | TL, TK, TM  |
|  |  |  |  |  |  |  |
| Cu 25 [Bar]   | Cu 25; 34 [Bar]<br>StS 16 [Bar]   | Cu 25 [Bar]   | Cu 16 (L plate) [Bar]<br>Cu 25 (H plate) [Bar]                                      | Cu 25 [Bar]   | Cu 25 [Bar]   | Cu 25 [Bar]   |

Safe brazing materials for **all your application demands**



**Standard corrosion resistance** brazing type for clean liquids and non-corrosive or non-aggressive applications



**Medium corrosion resistance** brazing type for demanding heating and domestic hot water applications



The **ultimate corrosion resistance** brazing type in complete stainless steel for the most challenging applications

\*XB06 - H+ is only available with Cu-brazing    \*\*DW - Double Wall/Sonder Safe