

**AIREFRIG**  
**AUSTRALIA**  
100% AUSTRALIAN OWNED

# Capital Equipment

---

**Enthalpy**

**Danfoss**

**cubigel**<sup>®</sup>  
compressors  
Cooling Expert 

**KAR** | HEAT  
**YER** | EXCHANGERS

- Designed & assembled in Australia using high quality components
- Powered by globally renowned quality compressors from Bitzer (semi-hermetic models), Copeland and Manuerop (hermetic models)
- Pre-wired back to electrical box

- Designed for all Australian conditions with white powder coated weatherproof casing
- Supercoat condenser treatment - 5000 hour salt spray test
- Fitted with quality pre-wired fans from ebm-papst

## Enthalpy

[See the range of Enthalpy Condensing Units](#)



### TD SEMI-HERMETIC & HERMETIC

- High efficiency range available with ebm-papst EC fans and Bitzer CRII capacity regulation (10-100%)

#### TD Hermetic



#### TD Semi-Hermetic



## Enthalpy

[See the range of Enthalpy Condensing Units](#)



### FLAT BASE SEMI-HERMETIC & HERMETIC

- Pre-fitted with fan speed controller, drier and sight glass
- Options for models with suction accumulator and weatherproof cover

#### FB Hermetic



#### FB Semi-Hermetic



### EB BASIC

- Open style unit supplied without condenser
- Semi-hermetic models powered by Bitzer compressors
- Pre-wired back to electrical box
- Standard or premium range available

#### EB Basic



#### PREMIUM MODELS FITTED WITH:

- Bitzer CR11 10-100% capacity regulation
- Bitzer compressor head cooling fan
- Dekal Oil Level Regulator



- Sleek, compact design with energy efficiency and low noise operation
- Trouble-free installation

- Micro Channel Heat Exchanger designed for lower refrigerant charges
- Compatible with low GWP refrigerants

ENGINEERING  
TOMORROW



[See the range of Optyma Condensing Units](#)



## **OPTYMA™ BLUE COMMERCIAL FLAT BASE**

- Quiet operation due to 6 pole fan motor assemblies
- Controls fitted as standard
- Pre-wired back to electrical box



## **OPTYMA™ SLIM**

- Fully fitted with mechanical LP/HP and fan speed controller
- High efficiency ebm-papst fan motors







## OPTYMA™ PLUS

- Connectivity options with Danfoss Optyma Plus controller
- Cost effective energy efficiency (ambient sensor floating condensing pressure)
- Acoustic lined panels – low noise operation
- Low temp liquid injection models available for R448A/R449A

**SPACE  
SAVING  
STACK  
MOUNTING  
OPTION**



## OPTYMA™ PLUS INVERTER

- High Efficiency model
- Blind VSD controlled through Optyma Plus Controller
- Stepless capacity modulation  
–20–30% energy efficiency vs fixed speed alternative



- Fractional condensing unit range from 8cc to 34cc
- Designed for all conditions, rated to ambient 43°C

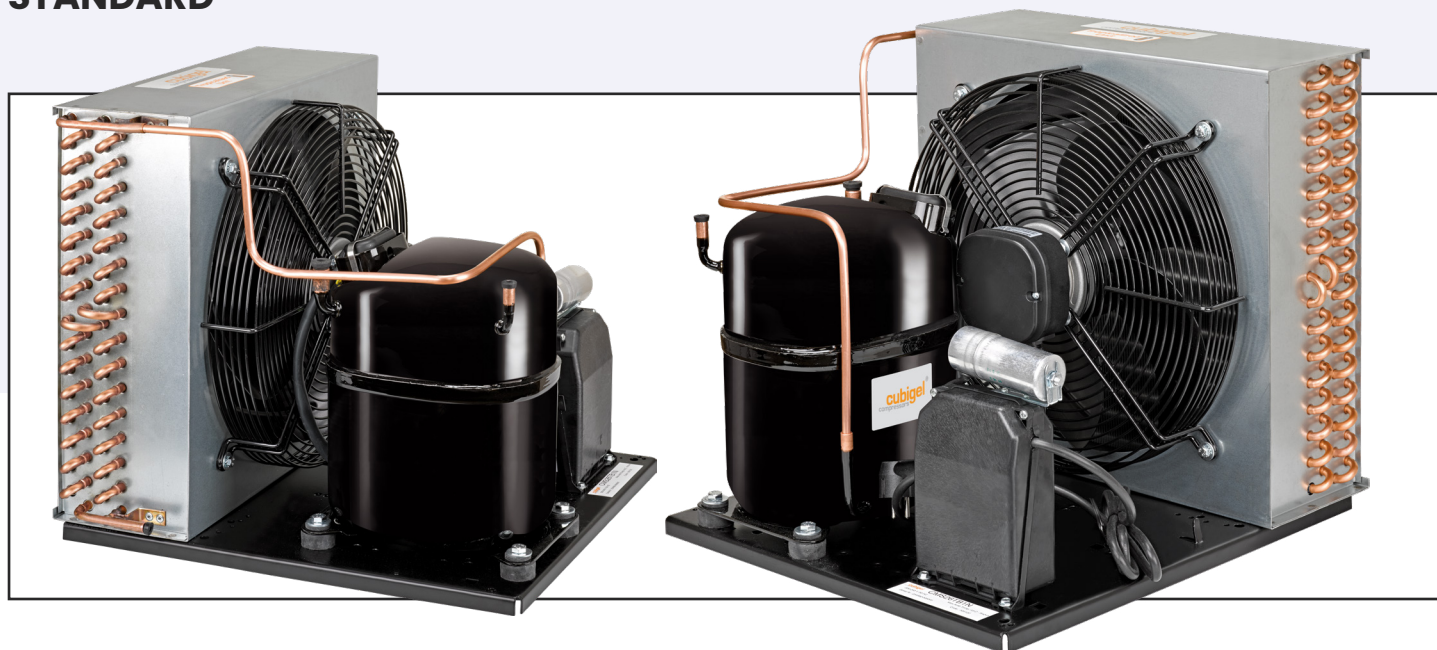
- High efficiency compressor & fan motor models available
- Available for the latest refrigerants including R290, R448A, R449A and R513A



[See the range of Cubigel Condensing Units](#)



## STANDARD



## FULLY-FITTED

- From 14cc to 34cc

### PRE-FITTED WITH:

- ebm-papst IQ fan motors
- Danfoss HP/LP control
- Danfoss sight glass
- Danfoss drier



- Designed for Australian conditions
- Powder coated aluminium casing
- Stainless steel fittings
- Quality ebm-papst fans across the range

- Fin spacing 7mm in low temperature models
- Standard coils designed for multiple refrigerants

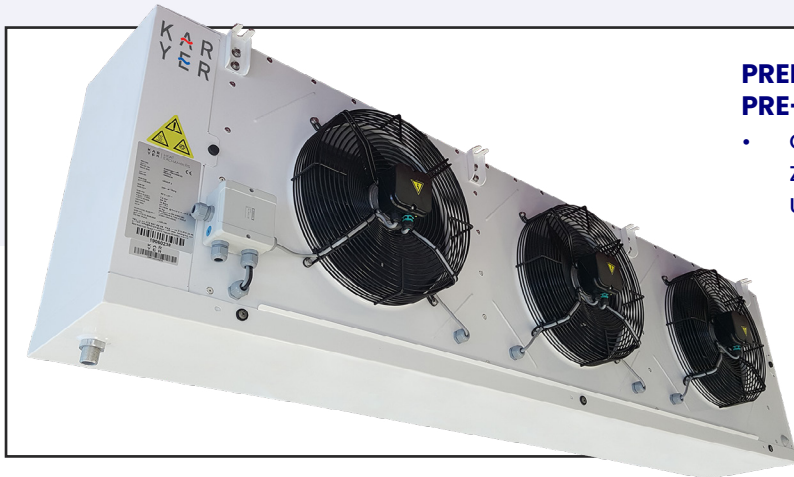
**KAR** | HEAT  
**YER** | EXCHANGERS

[See the range of Karyer Evaporators](#)



## EB SERIES

- 300-350mm fan models
- Capacity range
  - 1.8 to 18.9kW nominal medium temp
  - 1.6 - 12.5kW nominal low temp
- Standard models or premium models
- Access doors - hinged & removable
- Reversible drain tray
- Two wire defrost safety termination thermostats (5.0amp) on low temp models



### PREMIUM MODELS PRE-FITTED WITH:

- Carel EVD-ice,  
Z-Valve and  
Ultracap

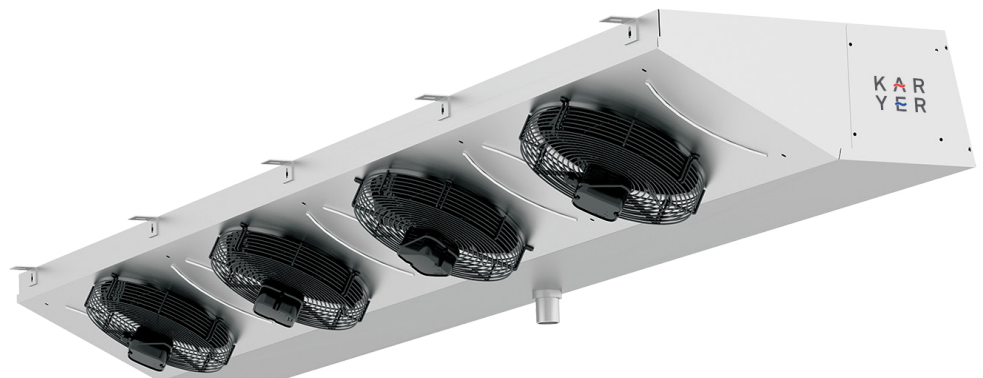


## EG SERIES

- 300mm fan models
- Capacity range
  - 1.5 to 8.6kW nominal medium temp
  - 0.8 to 6.2kW nominal low temp
- Low profile, angled space saving design
- Hinged drain trays

### FEATURES:

- Low Temp Models fitted with two wire Defrost heater safety termination thermostats (5.0amp)







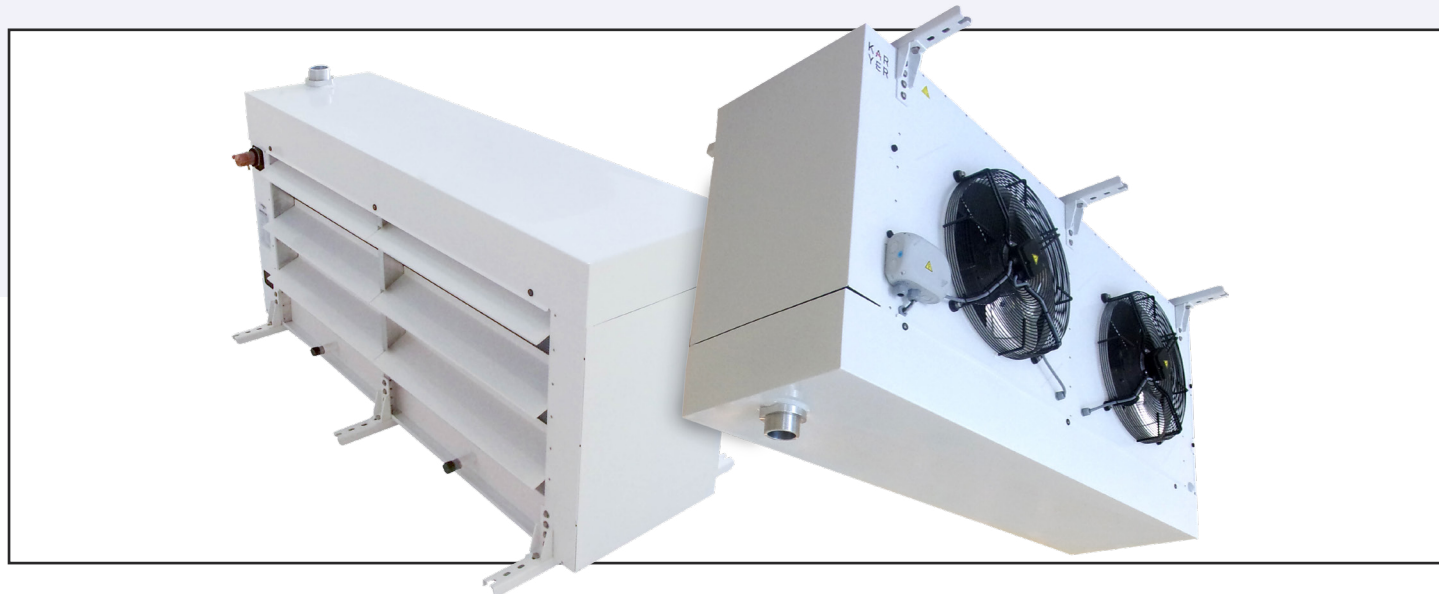
## EA SERIES

- 500mm fan models
- Capacity range
  - 9 to 44kW nominal medium temp
  - 8.5 to 35kW nominal low temp
- Access doors - hinged & removable
- All models pre-fitted with Carel EVD-ice, Z-Valve and Ultracap
- Two wire defrost safety termination thermostats (5.0amp) on low temp models



## WEA-L WATER DEFROST SERIES

- 500mm fan models
- Capacity range
  - 18.5 to 31kW nominal low temp
- Access doors - hinged & removable
- All models pre-fitted with Carel EVD-ice, Z-Valve and Ultracap





KAR  
YER | HEAT  
EXCHANGERS

[See the range of Karyer Evaporators](#)



## EC-A CABINET COOLERS

- 200-230mm fan models
- NIQ EC fan motors
- Epoxy powder coated fin treatment
- 450W to 1400W nominal medium temp
- 350W to 1050W nominal low temp



## ED-A CABINET COOLERS

- 250-300mm fan models
- Epoxy powder coated fin treatment
- 450W to 1400W nominal medium temp



## ED DUAL AIR THROW

- 300mm fan models
- Capacity range  
- 2.7 to 11.5kW nominal medium temp
- Ceiling mounted, specially designed compact coils



- Panels are powder coated galvanised sheet
- Gold Epoxy fin treatment
- Fitted with ebm-papst EC fans, pre-wired to electrical box

- Available for multiple refrigerants
- 43 bar models available for R410A applications

**KAR** | HEAT  
**YER** | EXCHANGERS

[See the range of Karyer Condensers](#)



## KAB SERIES

- 21kW to 585kW – R404A, 10KTD, 43°C Ambient
- Can be installed horizontally or vertically, supplied with choice of mounting kit
- 500mm, 630mm or 800mm fan size models
- Single or Twin coil configurations available

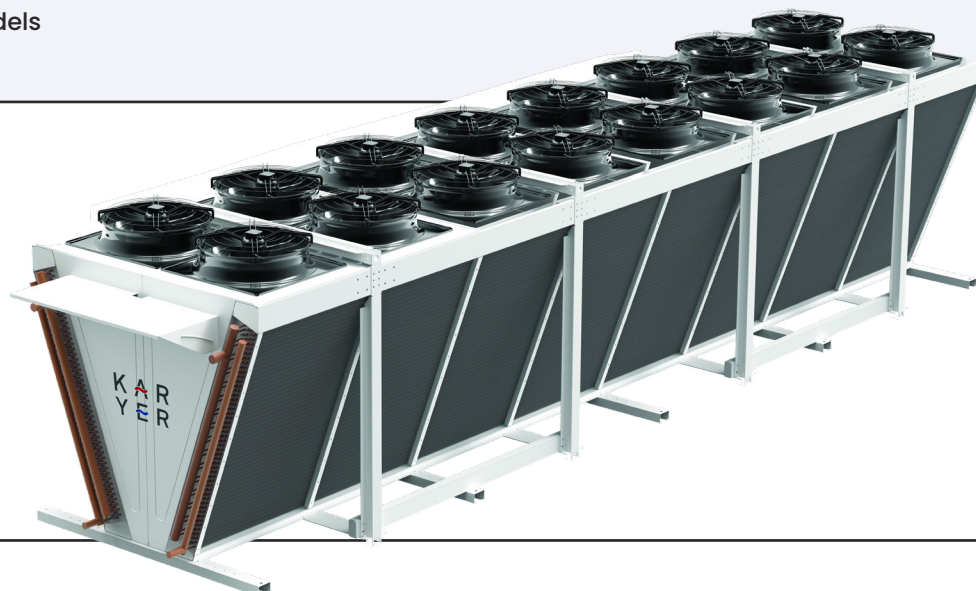


## KC SERIES

- 106kW to 551kW – R404A, 10KTD, 43°C Ambient
- 800mm fan size across all models

### FEATURES

- Space saving, compact V shape design





## Locations

---

### NSW

---

ALEXANDRIA  
NEWINGTON  
PADSTOW

### VIC

---

MULGRAVE  
THOMASTOWN  
TRUGANINA

### WA

---

BAYSWATER  
O'CONNOR  
WANGARA  
HEAD OFFICE

### QLD

---

BANYO  
WILLAWONG

### SA

---

WINGFIELD