



Original. Patented. Proven

The original press fittings specifically engineered to join copper tubing in high-pressure HVAC and Refrigeration systems

Made in the USA

RLS press fittings were specifically designed and engineered to join copper tube in high-pressure HVAC and refrigeration systems.

The patented RLS press fittings are fully registered and listed to UL207 for pressures up to 700 PSI.

These first-of-their-kind fittings connect quickly and easily using an RLS-approved press tool and jaws replacing the time-consuming practice of manually brazing joints.

The pressing procedure is similar to the popular water press fittings but the RLS press fittings have been developed to withstand the high pressures found in HVAC/R systems.

These patented Press Fittings provide quick and easy connections using an RLS-approved press tool with the relevant jaws saving time and money compared to brazing.



Press Fittings materials: The body is refrigerant grade copper (ASTM-B75 or ASTM-B743) & the O-rings are HNBR. Available sizes: 1/4", 5/16", 3/8", 1/2", 5/8", 3/4", 7/8", 1", 1-1/8", 1-1/4", 1-3/8", 1-5/8" & 2-1/8".

RLS Press Fittings are backed by a 15-year limited warranty when installed in accordance with RLS installation instructions using RLS-approved tools and jaws
(See information on rapidlockingsystem.com for complete details)

RLS Rapid Locking System

SAFE, FAST AND RELIABLE: THE IDEAL INSTALLATION AND REPAIR SOLUTION

SAFE: Elimination of the brazing process by using a flame-free press tool results in a safer work environment without the added risk of fire hazards.

FAST: Connections completed in 10 seconds.

RELIABLE: More consistent and dependable connections requiring less rework than the traditional brazing method.

Plus, RLS press fittings are backed by a 15-year limited warranty.

Overall, projects will result in higher-quality work that can be completed successfully by fewer people in significantly less time, resulting in increased profit per job and the ability to get more jobs done.

THE RLS ADVANTAGE

- Connects in 10 seconds
 - UL listed to 700 psi
- Permanent metal-to-metal joints
 - Huge time savings
- Less equipment required
- Safer conditions, no fire hazards
 - No need to nitrogen purge
- More flexible access to job sites
 - 15-year limited warranty*



*See rapidlockingsystem.com.au for complete details.

FLAME-FREE FITTINGS FOR A SAFER, EASIER FUTURE

With the industry transitioning to flammable refrigerants contractors using RLS press fittings will benefit from offering flame-free services.

Advantages include

- A safer work environment
 - Reduced risks
- No need to nitrogen purge
- No dragging heavy equipment to the job site

Add up all of the benefits – safer conditions, no fire hazards and increased efficiencies.

RLS press fittings can offer huge cost and time savings with far fewer headaches.

RLS Rapid Locking System

As Easy as 1-2-3!

RLS Press Fittings are a simple, effective and economical method to create leak-free copper tube connections.

The RLS pressing process is very straightforward and can be completed with minimal training.

Copper tube ends only need to be prepared the same way as if they were going to be brazed.

Then in only 10 seconds the press tool creates a permanent and reliable mechanical joint and because there is no brazing the dangers associated with open flame torches, excess heat and flammable gases are eliminated.

Compatible Refrigerants for RLS products:

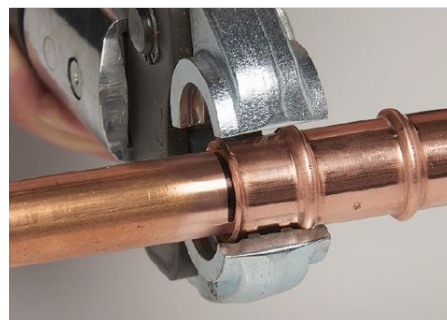
R32	R125	R134a	R143a	R152a
R227ea	R290	R404A	R407A	R407B
R407C	R407F	R-407G	R407H	R410A
R417A	R421A	R422A	R422B	R422C
R422D	R424A	R427A	R434A	R437A
R438A	R442A	R444A	R444B	R445A
R446A	R447A	R448A	R449A	R449B
R449C	R450A	R451A	R451B	R452A
R452B	R452C	R453A	R454A	R454B
R454C	R455A	R456A	R457A	R458A
R507A	R513A	R513B	R515A	R515B
R600	R600a	R718	R1234yf	R1234ze

Ethylene Glycol

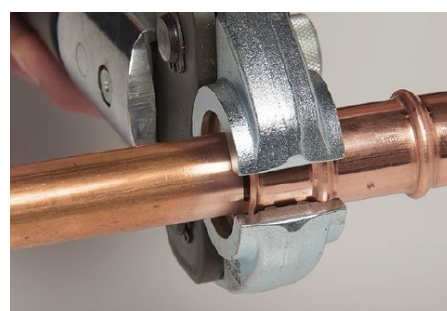
Contact Airefrig Australia about special blends or other refrigerants not listed above.

Check your local codes to ensure that RLS press fittings are suitable for use with your specific refrigerant.

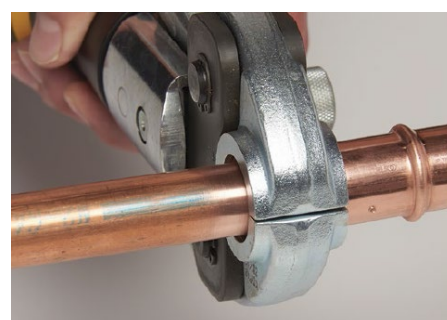
RLS fittings are also compatible with the following industrial (non-refrigerant) gasses: nitrogen, argon, helium and oxygen (non-medical).



1. Insert the tool over the fitting



2. Align the jaws



3. Activate battery-powered tool

RLS Rapid Locking System - Tools and Jaws

Klauke® 19 kN and 32 kN Press Tools

Benefits:

- Durable high-quality construction that is built to last
- Short pressing cycle – 10 seconds or less – increases productivity
- Compact design and 350° jaw rotation allows technician to install in tight spaces
- Automatic piston return
- Safety feature that lets the press cycle be interrupted, allowing for manual release of the piston, if needed
- Tool service indicated via imbedded LEDs illuminates at 10,000 cycle

19 kN Tool Features:

Pressing Force: 19 kN

Presses/charge: 100-150 (2.0 Ah)

Operating Temp. Range: -10°C to 40°C

Weight with Battery:

Without Jaw: 1.8 kg

Including Jaw: 3.1 kg

Dimensions: 395 x 80 x 118 mm



32 kN Tool Features:

Pressing Force: 32 kN

Presses/charge: 350-400 (4.0 Ah)

Operating Temp. Range: -10°C to 40°C

Weight with Battery:

Without Jaw: 3.6 kg

Including Jaw: 5.7 kg

Dimensions: 359 x 76 x 317 mm



RLS Rapid Locking System - Tools and Jaws

Klauke® 19 kN and 32 kN Jaws

Klauke® 19 kN Jaws

Size (inch)	Airefrig Item Code	RLS Item Code
1/4	PF14KJ19KN	399021191040
5/16	PF516KJ19KN	399021191050
3/8	PF38KJ19KN	399021191060
1/2	PF12KJ19KN	399021191080
5/8	PF58KJ19KN	399021191100
3/4	PF34KJ19KN	399021191120
7/8	PF78KJ19KN	399021191140
1	PF1KJ19KN	399021191160
1-1/8	PF118KJ19KN	399021191180
1-1/4	PF114KJ19KN	399021191200
1-3/8	PF138KJ19KN	399021191220

Klauke® 32 kN Jaws

Size (inch)	Airefrig Item Code	RLS Item Code
1/4	PF14KJ32KN	399021321040
3/8	PF38KJ32KN	399021321060
1/2	PF12KJ32KN	399021321080
5/8	PF58KJ32KN	399021321100
3/4	PF34KJ32KN	399021321120
7/8	PF78KJ32KN	399021321140
1-1/8	PF118KJ32KN	399021321180
1-3/8	PF138KJ32KN	399021321220
1-5/8	TBA	TBA
2-1/8	TBA	TBA

RIDGID® Jaws

Size (inch)	Airefrig Item Code	RLS Item Code
1/4	PF14RJ	399022001040
5/16	PF516RJ	399022001050
3/8	PF38RJ	399022001060
1/2	PF12RJ	399022001080
5/8	PF58RJ	399022001100
3/4	PF34RJ	399022001120
7/8	PF78RJ	399022001140
1-1/8	PF118RJ	399022001180
1-3/8	PF138RJ	399022001220



RLS Accessories

Airefrig Item Code	RLS Item Code	Description
PFCG	399040306	RLS Crimp Gauge
PFDG	399040308	RLS Depth Gauge
3M8447	-	3M Scotch-Brite Doodlebug maroon hand pad 230x150mm

RLS Rapid Locking System – Tools and Jaws

Tool Kit with (No Jaws) Klauke® 19 kN

Airefrig Item Code: PFKCT19KN
(RLS Item Code: 399011190001)

Klauke® 19 kN Tool Kit Includes:

- 1 x Klauke 19kN crimping tool
- 1 x Battery charger (Makita)
- 2 x 5.0Ah Lithium-ion batteries (Makita)
- Hard plastic carrying case
- Accessory Kit:
RLS Crimp Gauge, RLS Depth Gauge, Abrasive Pad, Tube Cutter, Brush, Deburring Tool, Permanent Marker.



Tool Kit with 5-Jaw Kit Klauke® 19 kN

Airefrig Item Code: PF5KLKIT19KN
(RLS Item Code: 399011190502)

Klauke® 19 kN Tool Kit Includes:

- 1 x Klauke 19kN crimping tool
- 1 x Battery charger (Makita)
- 2 x 5.0Ah Lithium-ion batteries (Makita)
- 5 x Jaws (3/8", 1/2", 5/8", 7/8", 1-1/8")
- Hard plastic carrying case
- Accessory Kit:
RLS Crimp Gauge, RLS Depth Gauge, Abrasive Pad, Tube Cutter, Brush, Deburring Tool, Permanent Marker.



8-Jaw Kit Klauke® 19 kN

Airefrig Item Code: PF8KJKIT
(RLS Item Code: 399031190801)

Klauke® 19 kN Jaw Kit Includes:

- 8 x Jaws (1/4", 3/8", 1/2", 5/8", 3/4", 7/8", 1-1/8", 1-3/8")
- Hard plastic carrying case



RLS Rapid Locking System – Tools and Jaws

8-Jaw Kit with Accessories RIDGID®

Airefrig Item Code PF8RJKIT:
(RLS Item Code: 399032000801)

RIDGID® Jaw Kit Includes:

- 8 x Jaws (1/4", 3/8", 1/2", 5/8", 3/4", 7/8", 1-1/8", 1-3/8")
Note: 5/16" jaws sold separately.
- Hard plastic carry case
- Accessory Kit:
*RLS Crimp Gauge, RLS Depth Gauge,
Abrasive Pad, Tube Cutter, Brush,
Small Deburring Tool, Large Deburring Tool,
Permanent Marker*



8-Jaw Kit Klauke® 32 kN

Airefrig Item Code: PF8JKIT32KN
(RLS Item Code: 399031320801)

Klauke® 32 kN Jaw Kit Includes:

- 8 x Jaws (1/4", 3/8", 1/2", 5/8", 3/4", 7/8", 1-1/8", 1-3/8")
- Hard plastic carrying case
- Accessory Kit:
*RLS Crimp Gauge, RLS Depth Gauge,
Abrasive Pad, Brush, Permanent Marker*



Crimper Kit (No Jaws) Klauke® 32 kN

Airefrig Item Code: PFKLKIT32KN
(RLS Item Code: 399011320002)

Klauke® 32 kN Crimper Includes:

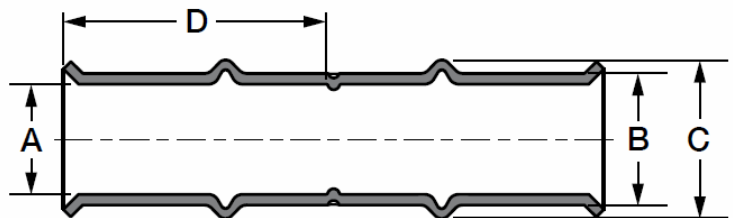
- 1 x Klauke 32kN crimping tool
- 1 x Battery charger (Makita)
- 2 x 5.0Ah Lithium-ion batteries (Makita)
- Hard plastic carrying case



RLS Rapid Locking System - Fittings

Copper Couplings

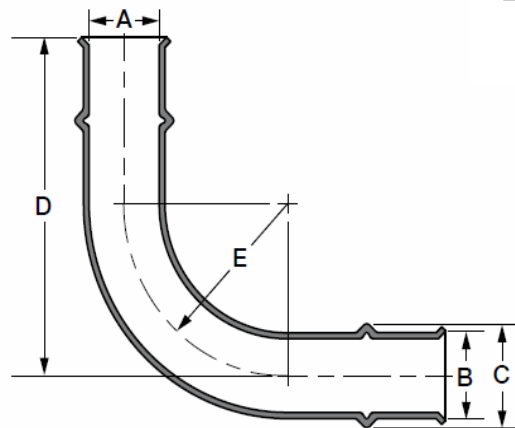
Size (inch)	Airefrig Item Code	RLS Item Code	Dimensions (mm)				Box Qty
			A	B	C	D	
1/4	PFC14FFHNBR	3011040400111	6.6	8.6	11.4	24.1	10
5/16	PFC516FFHNBR	3011050500111	8.2	10.2	13.2	23.6	10
3/8	PFC38FFHNBR	3011060600111	9.8	11.8	15.0	24.9	10
1/2	PFC12FFHNBR	3011080800111	13.0	15.0	18.5	31.8	10
5/8	PFC58FFHNBR	3011101000111	16.1	18.7	22.6	31.5	10
3/4	PFC34FFHNBR	3011121200111	19.3	22.4	27.2	32.8	10
7/8	PFC78FFHNBR	3011141400111	22.5	25.8	30.2	33.3	10
1	PFC1FFHNBR	3011161600111	25.7	29.5	34.5	33.3	10
1-1/8	PFC118FFHNBR	3011181800111	28.8	32.6	36.8	32.8	10
1-1/4	PFC114FFHNBR	3011202000111	32.1	35.9	41.1	33.0	12
1-3/8	PFC138FFHNBR	3011222200111	35.2	39.0	44.5	39.9	12
1-5/8	PFC158FFHNBR32	3011262600111	41.7	47.8	55.4	47.0	4
2-1/8	PFC218FFHNBR32	3011343400111	54.3	60.5	68.1	59.4	4



RLS Rapid Locking System - Fittings

Copper Elbows 90°

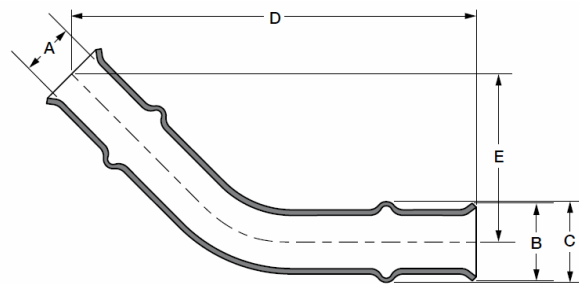
Size (inch)	Airefrig Item Code	RLS Item Code	Dimensions (mm)					Box Qty
			A	B	C	D	E	
1/4	PFE1490FFHNBR	3031040400111	6.6	8.6	11.5	51.1	17.3	10
5/16	PFE51690FFHNBR	3031050500111	8.2	10.2	13.1	54.1	20.6	10
3/8	PFE3890FFHNBR	3031060600111	9.8	11.8	14.9	57.7	23.6	10
1/2	PFE1290FFHNBR	3031080800111	13.0	15.0	18.6	73.2	30.0	10
5/8	PFE5890FFHNBR	3031101000111	16.1	18.7	22.5	81.5	37.3	10
3/4	PFE3490FFHNBR	3031121200111	19.3	22.4	27.2	88.1	44.7	10
7/8	PFE7890FFHNBR	3031141400111	22.5	25.8	30.2	95.3	51.6	10
1	PFE190FFHNBR	3031161600111	25.7	29.5	34.6	102.6	59.2	10
1-1/8	PFE11890FFHNBR	3031181800111	28.8	32.6	36.7	109.0	64.5	10
1-1/4	PFE11490FFHNBR	3031202000111	32.1	35.9	41.0	109.2	64.3	5
1-3/8	PFE13890FFHNBR	3031222200111	35.2	39.0	44.4	115.3	69.9	5
1-5/8	PFE15890FFHNBR32	3031262600111	41.7	47.8	55.4	139.4	82.6	2
2-1/8	PFE21890FFHNBR32	3031343400111	54.3	60.5	68.1	173.5	108.0	2



RLS Rapid Locking System - Fittings

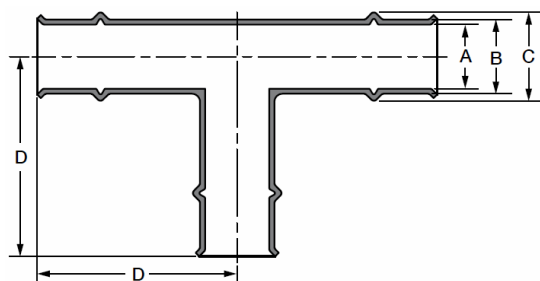
Copper Elbows 45°

Size (inch)	Airefrig Item Code	RLS Item Code	Dimensions (mm)					Box Qty
			A	B	C	D	E	
3/8	PFE3845FFHNBR	3081060600111	9.8	14.2	14.9	74.7	30.7	10
1/2	PFE1245FFHNBR	3081080800111	13.0	18.0	18.6	94.5	39.1	10
5/8	PFE5845FFHNBR	3081101000111	16.1	21.8	22.5	100.8	41.7	10
3/4	PFE3445FFHNBR	3081121200111	19.3	25.9	27.0	104.6	43.2	10
7/8	PFE7845FFHNBR	3081141400111	22.5	28.7	30.2	114.0	47.2	10
1-1/8	PFE11845FFHNBR	3081181800111	28.5	35.8	36.7	122.9	50.8	10
1-3/8	PFE13845FFHNBR	3081222200111	35.2	42.7	44.4	129.8	53.6	5



Copper Tees

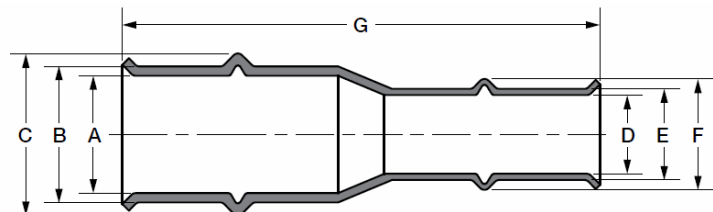
Size (inch)	Airefrig Item Code	RLS Item Code	Dimensions (mm)				Box Qty
			A	B	C	D	
3/8	PFT38FFHNBR	3091060606111	9.8	11.8	14.9	41.4	10
1/2	PFT12FFHNBR	3091080808111	13.0	15.0	18.2	56.6	10
5/8	PFT58FFHNBR	3091101010111	16.1	18.7	22.0	58.4	10
3/4	PFT34FFHNBR	3091121212111	19.3	22.4	26.6	60.5	10
7/8	PFT78FFHNBR	3091141414111	22.5	25.8	30.2	61.7	10
1	PFT1FFHNBR	3091161616111	25.7	29.5	34.6	65.8	10
1-1/8	PFT118FFHNBR	3091181818111	28.8	32.6	36.7	65.0	10
1-1/4	PFT114FFHNBR	3091202020111	32.1	35.9	41.0	85.3	5
1-3/8	PFT138FFHNBR	3091222222111	35.2	39.0	44.4	85.3	5



RLS Rapid Locking System - Fittings

Copper Reducers

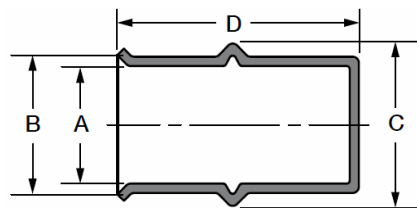
Size (inch)	Airefrig Item Code (RLS Item Code)	Dimensions (mm)							Box Qty
		A	B	C	D	E	F	G	
3/8 to 1/4	PFR3814FFHNBR (3051060400111)	9.8	11.8	14.9	6.6	8.6	11.5	56.9	10
1/2 to 1/4	PFR1214FFHNBR (3051080400111)	13.0	15.0	18.6	6.6	8.6	11.5	68.8	10
1/2 to 3/8	PFR1238FFHNBR (3051080600111)	13.0	15.0	18.6	9.8	11.8	14.8	65.5	10
5/8 to 1/4	PFR5814FFHNBR (3051100400111)	16.1	18.7	22.5	6.6	8.6	11.5	68.6	10
5/8 to 3/8	PFR5838FFHNBR (3051100600111)	16.1	18.7	22.5	9.8	11.8	14.8	68.6	10
5/8 to 1/2	PFR5812FFHNBR (3051100800111)	16.1	18.7	22.5	13.0	15.0	18.2	78.7	10
3/4 to 1/2	PFR3412FFHNBR (3051120800111)	19.3	22.4	26.7	13.0	15.0	18.2	78.7	10
3/4 to 5/8	PFR3458FFHNBR (3051121000111)	19.3	22.4	26.7	16.1	18.7	22.1	76.2	10
7/8 to 1/2	PFR7812FFHNBR (3051140800111)	22.5	25.8	30.2	13.0	15.0	18.2	77.5	10
7/8 to 5/8	PFR7858FFHNBR (3051141000111)	22.5	25.8	30.2	16.1	18.7	22.1	77.5	10
7/8 to 3/4	PFR7834FFHNBR (3051141200111)	22.5	25.8	30.2	19.3	22.4	26.7	79.0	10
1 to 7/8	PFR178FFHNBR (3051161400111)	25.7	29.5	34.7	22.5	25.8	30.2	78.5	10
1-1/8 to 1/2	PFR11812FFHNBR (3051180800111)	28.8	32.6	36.7	13.0	15.0	18.2	82.6	10
1-1/8 to 5/8	PFR11858FFHNBR (3051181000111)	28.8	32.6	36.7	16.1	18.7	22.1	82.6	10
1-1/8 to 3/4	PFR11834FFHNBR (3051181200111)	28.8	32.6	36.7	19.3	22.4	26.7	80.8	10
1-1/8 to 7/8	PFR11878FFHNBR (3051181400111)	28.8	32.6	36.7	22.5	25.8	30.2	78.7	10
1-3/8 to 7/8	PFR13878FFHNBR (3051221400111)	35.2	39.0	44.4	22.5	25.8	30.2	93.0	12
1-3/8 to 1-1/8	PFR138118FFHNBR (3051221800111)	35.2	39.0	44.4	28.8	32.6	36.7	84.8	12
1-5/8 to 1-1/8	PFR158118HNBR32 (3051261800111)	41.7	47.8	55.4	29.0	32.7	36.8	114.3	4
1-5/8 to 1-3/8	PFR158138HNBR32 (3051262200111)	41.7	47.8	55.4	35.2	39.1	44.5	109.2	4
2-1/8 to 1-3/8	PFR218138HNBR32 (3051342200111)	54.3	60.5	68.1	35.3	39.1	44.5	132.1	4
2-1/8 to 1-5/8	PFR218158HNBR32 (3051342600111)	54.3	60.5	68.1	41.7	47.8	55.4	128.3	4



RLS Rapid Locking System - Fittings

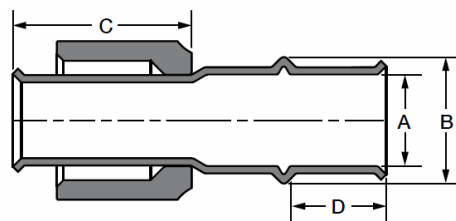
Copper End Caps

Size (inch)	Airefrig Item Code	RLS Item Code	Dimensions (mm)				Box Qty
			A	B	C	D	
1/4	PFEC14FFHNBR	3071040000111	6.6	8.6	11.5	36.8	10
5/16	PFEC516FFHNBR	3071050000111	8.2	10.2	13.1	36.8	10
3/8	PFEC38FFHNBR	3071060000111	9.8	11.8	14.9	36.8	10
1/2	PFEC12FFHNBR	3071080000111	13.0	15.0	18.2	50.0	10
5/8	PFEC58FFHNBR	3071100000111	16.1	18.7	22.0	50.3	10
3/4	PFEC34FFHNBR	3071120000111	19.3	22.4	26.6	50.0	10
7/8	PFEC78FFHNBR	3071140000111	22.5	25.8	30.2	48.3	10
1	PFEC1FFHNBR	3071160000111	25.7	29.5	34.6	50.8	10
1-1/8	PFEC118FFHNBR	3071180000111	28.8	32.6	36.7	50.5	10
1-1/4	PFEC114FFHNBR	3071200000111	32.1	35.9	41.0	63.5	12
1-3/8	PFEC138FFHNBR	3071220000111	35.2	39.0	44.4	63.2	12



Copper to SAE Flares

Size (inch)	Airefrig Item Code	RLS Item Code	Dimensions (mm)				Box Qty
			A	B	C	D	
1/4	PFSAEF14FFHNBR	3291040000111	6.6	11.5	35.1	14.2	10
3/8	PFSAEF38FFHNBR	3291060000111	9.8	14.9	35.1	14.7	10
1/2	PFSAEF12FFHNBR	3291080000111	13.0	18.2	34.8	19.1	10
5/8	PFSAEF58FFHNBR	3291100000111	16.1	22.0	37.6	19.1	10
3/4	PFSAEF34FFHNBR	3291120000111	19.3	26.6	37.6	20.3	10

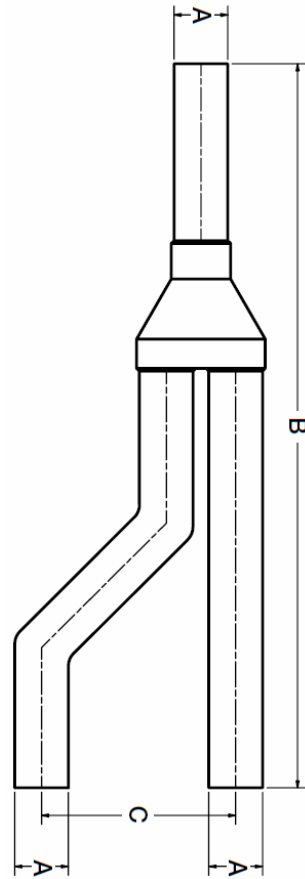
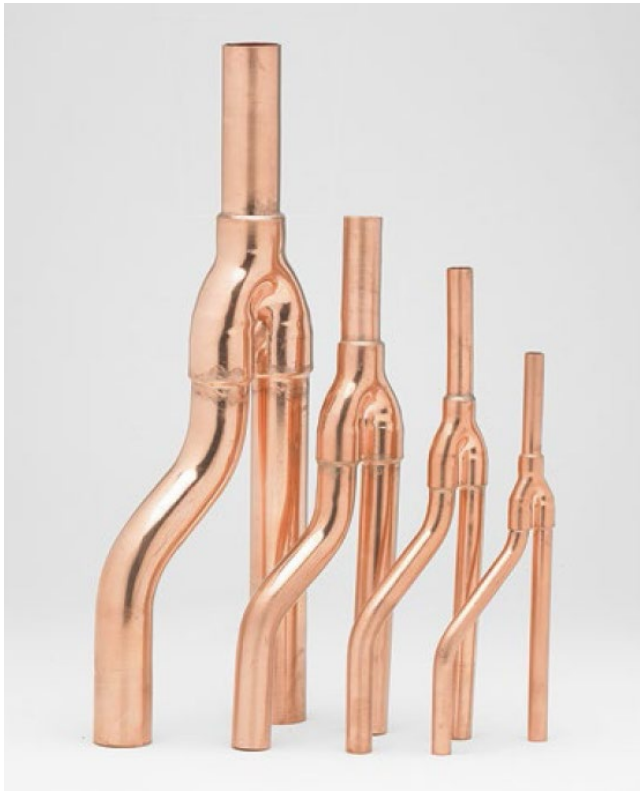


RLS Rapid Locking System – Fittings

Copper Y Joints

Size (inch)	Airefrig Item Code	RLS Item Code	Dimensions (mm)			Box Qty
			A	B	C	
3/8	PFYJ38	3771060606111	9.7	192.0	60.0	2
1/2	PFYJ12	3771080808111	12.7	227.1	63.0	2
5/8	PFYJ58	3771101010111	16.0	240.0	66.0	2
3/4	PFYJ34	3771121212111	19.1	258.1	69.1	2
7/8	PFYJ78	3771141414111	22.4	307.1	72.9	2
1-1/8	PFYJ118	3771181818111	28.7	333.0	89.9	1
1-3/8	PFYJ138	3771222222111	35.1	379.0	103.1	1

Note: The Y Joints have copper tails only and will require RLS Press Fittings when being installed.

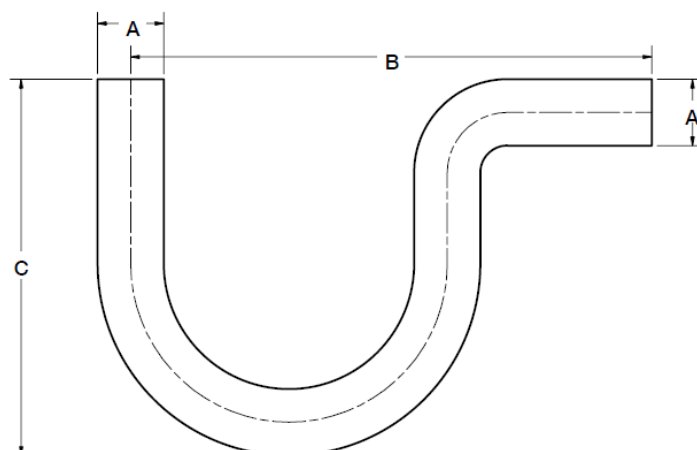


RLS Rapid Locking System – Fittings

Copper P Traps

Size (inch)	Airefrig Item Code	RLS Item Code	Dimensions (mm)			Box Qty
			A	B	C	
1/2	PFPT12	3761080800111	12.7	130.0	89.9	2
5/8	PFPT58	3761101000111	16.0	130.0	91.9	2
3/4	PFPT34	3761121200111	19.1	150.1	108.0	2
7/8	PFPT78	3761141400111	22.4	169.9	118.1	2
1-1/8	PFPT118	3761181800111	28.7	210.1	151.9	2
1-3/8	PFPT138	3761222200111	35.1	260.1	190.0	2

Note: The P traps have copper tails only and will require RLS Press Fittings when being installed.



RLS Rapid Locking System



Tool and Jaw Compatibility Matrix

			JAW MANUFACTURER				
			Klauke®			RIDGID®	Milwaukee®
TOOL MANUFACTURER	Model(s)	Size Range	15 kN	19 kN	32 kN	24 kN	32 kN
	MAP2L	1/4" – 1-1/8"	✓				
	MAP2L19	1/4" – 1-3/8"		✓			
	UAP 332	1/4" – 1-3/8"			✓		✓
	UAP 432	1/4" – 1-3/8"			✓		✓
	Romax Compact	1/4" – 1-3/8"		✓			
	Romax 3000	1/4" – 1-3/8"			✓		✓
	Romax 4000	1/4" – 1-3/8"			✓		✓
	PC-20 M	1/4" – 1-1/8"	✓				
	RP 200 RP 210 RP 240 RP 241	1/4" – 1-3/8"				✓	
	RP 330 RP 340 RP 350 RP 351	1/4" – 1-3/8"			✓		✓
	M12	1/4" – 1-3/8"				✓	
	M18	1/4" – 1-3/8"			✓		✓
	Pressgun Picco 6	1/4" – 1-3/8"				✓	
	Pressgun 6	1/4" – 1-3/8"			✓		✓
	ACO103	1/4" – 1-3/8"		✓			
	ACO203	1/4" – 1-3/8"			✓		✓
	ECO203	1/4" – 1-3/8"			✓		✓
	EFP203	1/4" – 1-3/8"			✓		✓
	DCE200	1/4" – 1-3/8"			✓		✓

Only RLS-approved tools and jaws can be used to install RLS fittings.

Revised 26/8/22

RLS Rapid Locking System

TECHNICAL DATA

Applications

- High Pressure HVAC/R
- Ethylene Glycol
- Non-Potable Water

Product Parameters

- Continuous Operating Temperature: 121°C
- O-Ring Temperature Rating: -40°C to +149°C
- Maximum Rated Pressure (MRP): 700 psi / 4,800 kPa
- Minimum Burst Pressure (UL 207): 2,100 psi / 14,500 kPa
- Vacuum Pressure Capability: <200 Microns
- External Helium Leak Rate: <7.5 x 10⁻⁷ Pa·m³/s at 20°C & 1,000 kPa
- Vibration Resistance: Conforms to UL109
- Size Availability (Inches): 1/4, 5/16, 3/8, 1/2, 5/8, 3/4, 7/8, 1, 1-1/8, 1-1/4, 1-3/8, 1-5/8, 2-1/8

Fitting Materials

- Fitting Body: Refrigerant Grade Copper, per ASTM-B75 or ASTM-B743
- O-Ring: HNBR

Compatibility

- Approved Oils: Mineral Oil, POE, PVE, PAG
- Approved Tubing Materials: Copper-to-Copper Connections
- Approved Tubing Tolerance: ASTM B88/B280, EN 12735 & AS/NZS 1571
- Approved Copper Tubing Types for 32 kN Tool/Jaws
 - Hard/Drawn: 1/4" - 2-1/8" Type ACR, L, K
 - Soft/Annealed: 1/4" - 1-3/8" Type ACR, L, K
- Approved Copper Tubing Types for 19 kN Tool/Jaws
 - Hard/Drawn: 1/4" - 1-3/8" Type ACR, L, K
 - Soft/Annealed: 1/4" - 1-3/8" Type ACR, L, K
- Approved Copper Tubing Types for 15 kN Tool/Jaws
 - Hard/Drawn: 1/4" - 1-1/8" Type ACR, L; 1/4" - 7/8" Type K

Agency Approvals and Certifications

- UL Listed: 207, SA#33958, SDTW (7) (Except where noted)
- UL Listed: Approved Use For Field & Factory Installations
- ISO 5149-2: Part 2 Compliant
- ASHRAE-15, ANSI 15, ASME B31.5 (504.7)
- ICC-ES, PMG-1296
- International Mechanical Code (IMC) 2021, 2018, 2015, 2012, 2009, 2006
- International Residential Code (IRC) 2021, 2018, 2015, 2012, 2009, 2006
- Uniform Mechanical Code (UMC) 2021, 2018, 2015, 2012, 2009, 2006
- CRN 0A22551

RLS Press Fitting Patents

- U.S. Patent No. 9,145,992
- U.S. Patent No. 9,638,361
- U.S. Patent No. D730,494
- Australian Patent No. 2012362443
- Brazilian Patent No. BR112014016012-0
- Canadian Patent No. 2,800,360
- Canadian Design Registration No. 149228
- EUIPO Registered Community Design No. 002218636-0001
- Japanese Patent No. 6051468
- Other Pending Patent Applications

RLS Press Tools and Jaws Patents

- Australian Design Registration No. 361533
- Canadian Design Registration No. 161804
- EUIPO Registered Community Design No. 002672667-0001
- Japanese Design Registration No. 1537545
- Other Pending Patent Applications



The familiar RLS stamp ensures a reliable connection!

